



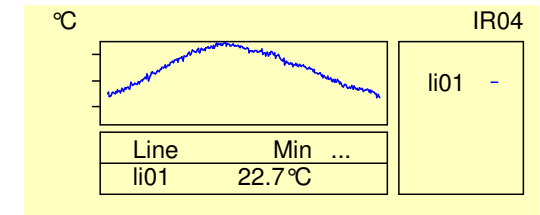
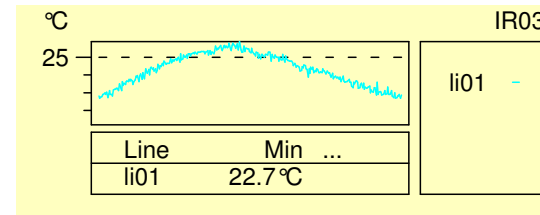
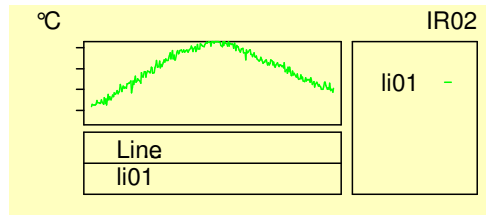
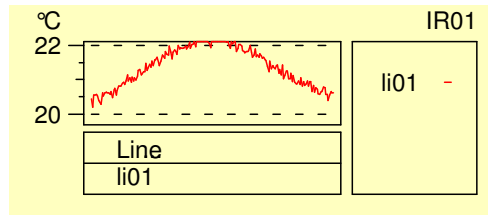
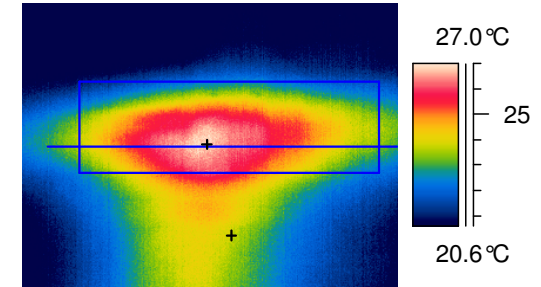
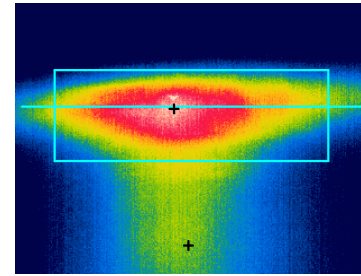
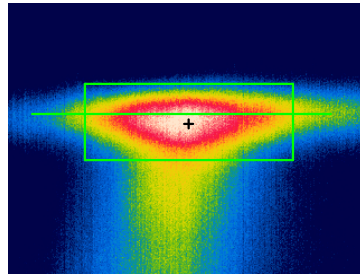
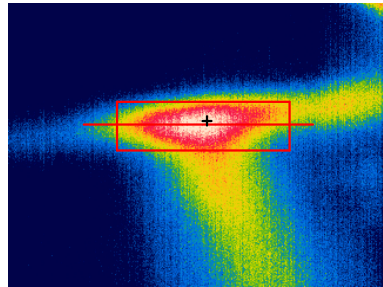
**EAST MIDLANDS  
THERMAL IMAGING LTD.**

**Thermal Imaging Survey  
Conducted at**

.....  
**On Behalf  
of**

.....  
**21st April 2007**

**By  
David Farmer**



| IR information          | Value    |
|-------------------------|----------|
| Time of creation        | 09:39:11 |
| Object parameter        | Value    |
| Atmospheric temperature | 24.5°C   |
| Label                   | Value    |
| SP01                    | 22.1°C   |
| LI01 : max              | 22.3°C   |
| AR01 : max-min          | 2.6°C    |

| IR information          | Value    |
|-------------------------|----------|
| Time of creation        | 10:07:04 |
| Object parameter        | Value    |
| Atmospheric temperature | 24.5°C   |
| Label                   | Value    |
| SP01                    | 24.5°C   |
| LI01 : max              | 24.6°C   |
| AR01 : max-min          | 4.4°C    |

| IR information          | Value    |
|-------------------------|----------|
| Time of creation        | 10:21:01 |
| Object parameter        | Value    |
| Atmospheric temperature | 24.5°C   |
| Label                   | Value    |
| SP01                    | 23.3°C   |
| SP02                    | 25.5°C   |
| LI01 : max              | 25.9°C   |
| AR01 : max-min          | 5.2°C    |

| IR information          | Value    |
|-------------------------|----------|
| Time of creation        | 10:34:52 |
| Object parameter        | Value    |
| Atmospheric temperature | 24.5°C   |
| Label                   | Value    |
| SP01                    | 23.7°C   |
| SP02                    | 26.7°C   |
| LI01 : max              | 26.9°C   |
| AR01 : max-min          | 6.3°C    |

The 4 images above show how the thermal patterns are increasing over a period of a hour, this indicates that a water leak may be present in this area.